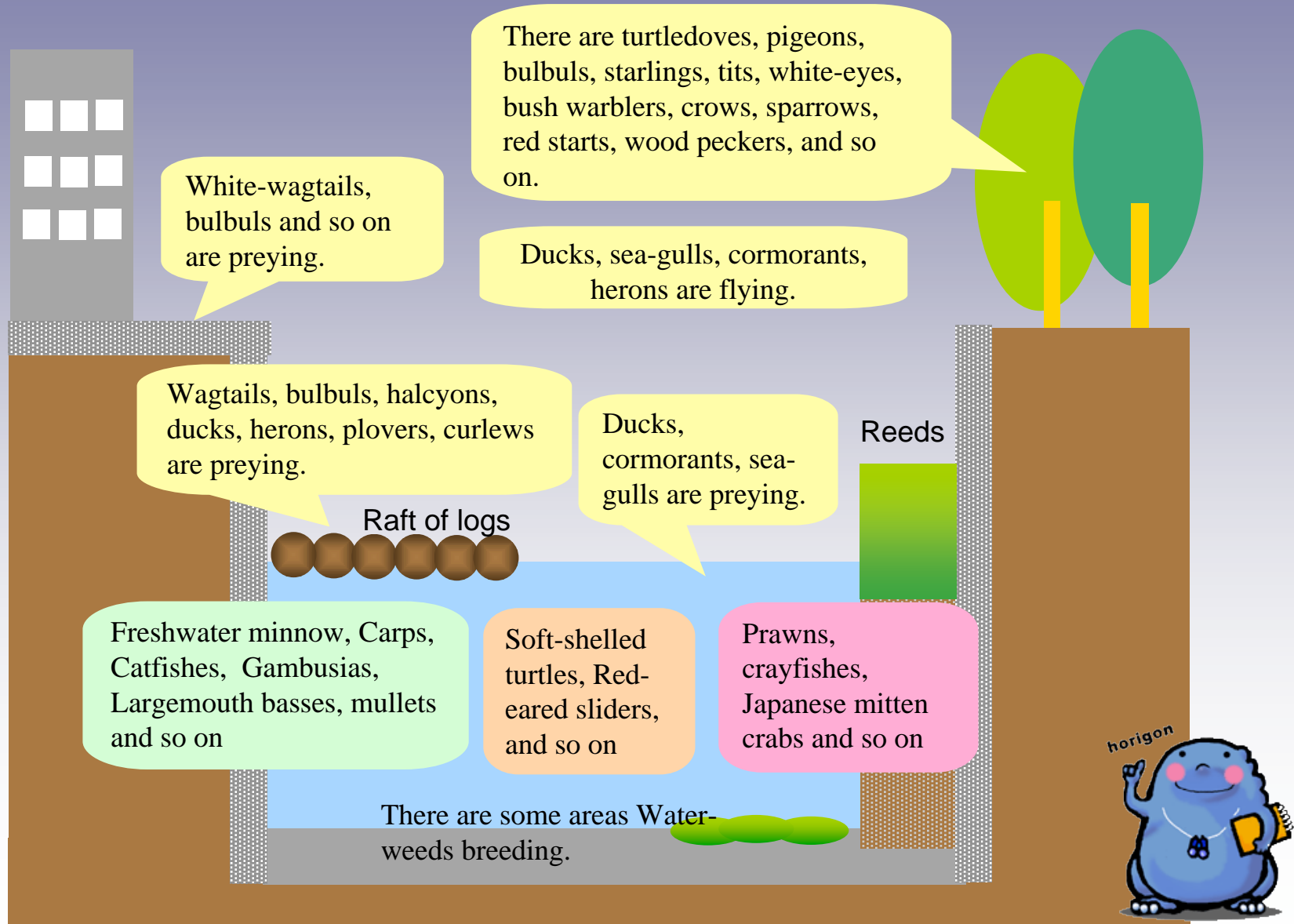


Living Things

Living Things Identified by HSC



The scene of waterfront

Meoto Bridge to the
Sanage Bridge



There are a lot of trees (Japanese cherry etc.) on either bank.
There are various surroundings of river

The Sanage Bridge



There are some drops.

Tabata Bridge to the
Jyohoku Bridge



There are reed beds at right bank.

Johoku Bridge to the
Nakadoto Bridge



There are a lot of trees (Japanese cherry etc.) on either bank.

Upstream of the Nishiki
Bridge



Forested riverside

Matsue lockage



Wide stream area

Sannou Bridge to Binya
Bridge



There are a lot of logs.

Binya Bridge to
downstream



Wide stream area

The scene of waterfront / The condition of waterweed



Motoirihimonn downstream



Sakae bridge downstream



Meoto bridge to Sanage bridge



Sanage bridge to Siga bridge



Water park



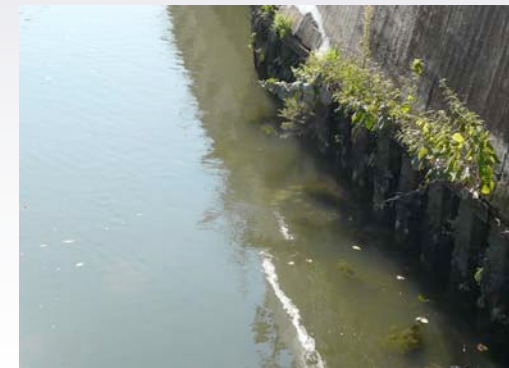
Tabata bridge to Jyohoku bridge



Johoku bridge



Nakadoto bridge to Horibata bridge



Horibata bridge downstream

Fishes living in the Horikawa River



Freshwater minnow



Carp



Largemouth bass



Catfish



Gambusia



Mullet

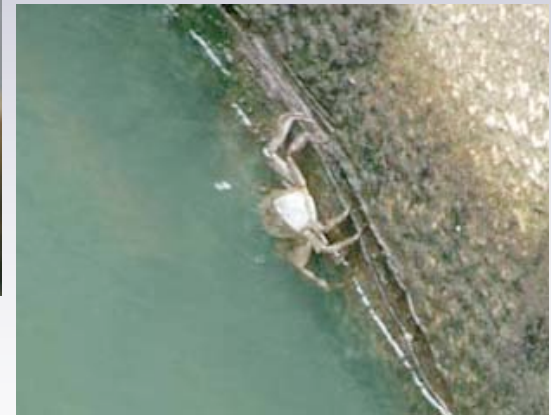
Prawns & Crabs living in the Horikawa River



Prawns



Crayfish



Japanese mitten crab

Japanese Giant Salamander observed in the Horikawa River in 2006



Japanese Giant Salamander

Turtles living in the Horikawa River



Soft-shelled turtle



Red-eared slider

Birds living in the Horikawa River (waterside)



Gray-wagtail



Sea-bulbul



Japanese-wagtail



White-wagtail

Birds living in the Horikawa Rive (waterside & surface)



Halcyon

Birds living in the Horikawa River (waterside & surface)

Winter birds



Pochard



Tufted duck



Mallard



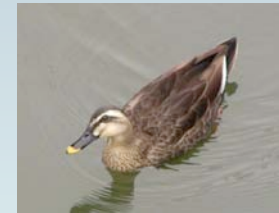
Northern Pintail



Common Teal

Ducks

Resident Bird



Spot bill duck

Birds living in the Horikawa River (waterside)

Group of Heron



Little Egret



Night Heron



Gray Heron

Birds living in the Horikawa River (waterside & surface)

Group of Seagull



Brown-hooded Gull

Group of Cormorant



Common Cormorant

Birds living in the Horikawa River (waterside)

Group of Snipe



Birds living in the Horikawa River (mainly in a tree)

Turtledove, Dove, Bulbul, Gray Starling, Great Tit, White-eye, Bush Warbler, Crow, Sparrow, Redstart, etc.

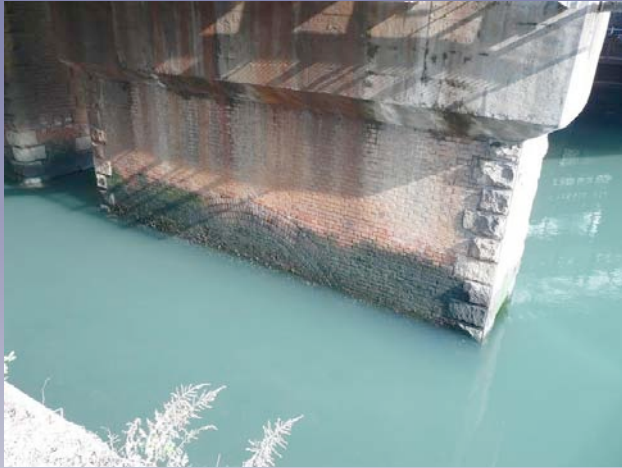


Turtledove



Gray Starling

Sessile Organisms in Estuarine Basin



Barnacle and Algae were stuck to JR line bridge pier.



Group of Bivalve and Algae were stuck to moored woods.
And Gray Mulletts inhabited there.

